

GENERAL

The room temperature when installing the floor must be between +18°C and 25°C, and the relative humidity in the premises is recommend to be between 25 % and 70 %. The flooring material must be acclimatised in the room for at least 24 hours before installation. The room temperature must be maintained for at least 48 hours after installation. If under-floor heating is installed, LT Click may be expo-sed to max. +27°C and the subfloor must be flat and stable.

SUBFLOOR

Luxury Tiles Click can be installed on most substrates, which must be clean, sufficiently dry and firm, free of yield or movement, free of cracks and flat (max 3mm per 2 metre and max 1.2mm per 25cm).

For a concrete substrate, the max. RH is 85 % during installation, measured in accordance with the current industry standard. Any dust or loose particles must be carefully removed. Any stains or spills from paint, oil or similar must be removed. Any unevenness in concrete floors must be levelled. Levelling compound/filler must be sufficiently firm for the area of application in the premises.

INSTALLATION

Measure the area to be installed and decide on the direction of installation. The width of the tile on the last row must be no less than approx. 50 mm. If so, adjust the width of the first row. Install the floor without adhesive: LT Click shall allways be installed so it is a floating construction. Allow an expansion gap around the whole outer border, i.e. also for pipes, stairs, pillars, door frames and thresholds. Expansion gap and maximum installation area is:

LT Click 6mm

Max area 500 sq.m., max length or width is 25m. Expansion gap 5-7mm with length/width of 0-10m and 7-10mm with length/width 10-25m.

LT Click 5mm

Max area 225 sq.m., max length or width is 15m. Expansion

gap 5-7mm with length/width of 0-10m and 7-8mm with length/width 10-15m.

In rooms with quadratic areas (L, F, T, U shapes), separate the areas using an expansion joint, especially by door openings. If you have any questions, please contact your dealer for further information. You can use the floor immediately after installation. The strips must be secured to the wall, never to the floor.

MISCELLANEOUS

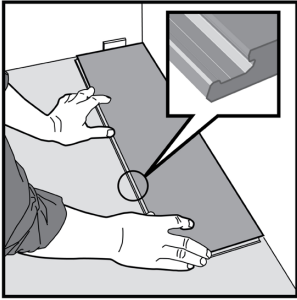
Colour matching between individual tiles can only be guaranteed for tiles with the same production number (see production number on each pack). Always check that all packs have the same production number before installation. We recommend that the tiles be installed in the same direction, in accordance with the mark/arrow on the reverse side of the tile.

Despite the fact that all material is inspected carefully before delivery, faults can occur. Any deviations (damaged or incorrect floor tiles) must be reported immediately to Kährs and must not be installed, but must be set aside before installation. If you are in any doubt before installation, always consult us. Any returns must always be approved by Luxury Flooring, so contact us to make sure they are processed correctly.

Office chairs that are to be used on Luxury Tiles Click must be fitted with soft type W castors in accordance with DIN 68131. Also note the firmness requirement for the substrate. Rubber wheels, rubber pads, printing ink from plastic, etc. can discolour the floor and leave permanent marks. Always use pads on furniture to protect the floor against surface damage, scratches, etc.

If construction activity is to continue, place protective covering on newly-installed floors. Do not tape the protective cover directly to the floor. The adhesive on the tape can have a negative effect on the floor and some types of adhesive are very difficult to remove.

Please feel free to contact us for additional information.

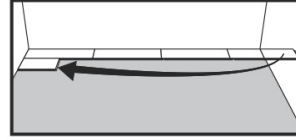


1.

First tile, first row.

Place the plank against the wall with 5-10mm distance from the wall on the left.

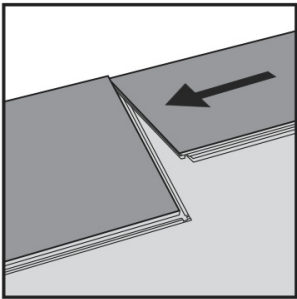
Later, after 3 rows, you can easily place the floor against the front wall as a distance of 5-10mm.



5.

Second row.

The first and last tile must be at least 300mm. Keep a small distance from the wall.



2.

Second tile, first row.

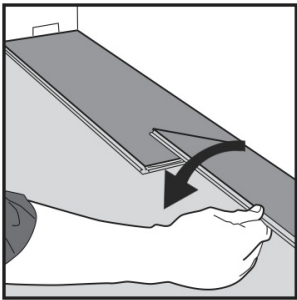
Place the tile carefully and tightly against the short end of the first one.



6.

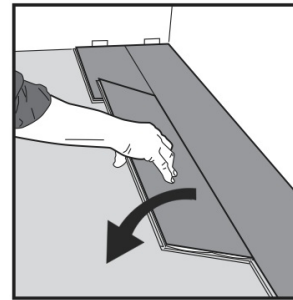
Distances between the short sides.

The minimum distance between the short ends of the tiles in parallel rows may not be any less than approx. 300 mm.



3.

Fold down in one single movement. Check that the tiles are tightly against each other. Press or tap on the newly-installed short end. At the end of the first row, leave a distance of at least 5-10mm to the wall.



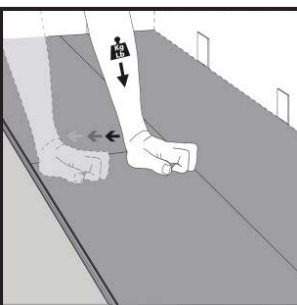
7.

Second tile, second row.

Place the tile carefully and tightly against the short end of the previous tile and fold it down in one single movement.

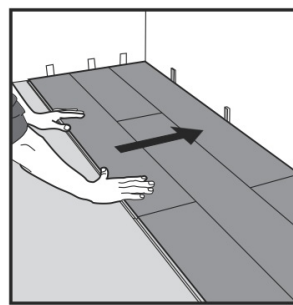
While folding down, check that the tiles are tightly against each other.

Press or tap on the newly-installed short end.



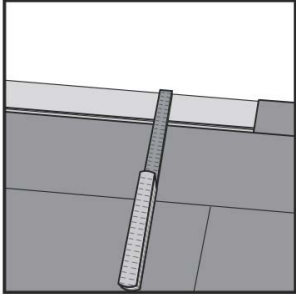
4.

Press down with your hand or tap lightly with a rubber mallet on the tile you just installed.



8.

After 2-3 rows. Adjust the distance to the front wall by positioning a distance of 5-10mm.

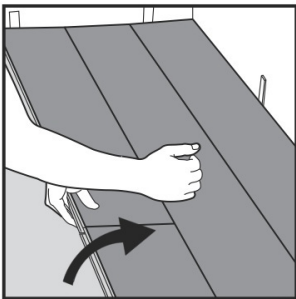


9.

Last row (and possibly the first row).

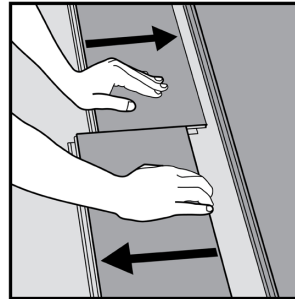
Minimum width 50mm. Remember the distance to the wall, 5-10mm. Cut/saw the tiles lengthways and glue the short ends using PVC adhesive.

DISMANTLING FLOOR TILES



1.

Separate the whole row by carefully lifting up and releasing the whole row. Fold up and release the whole long side.

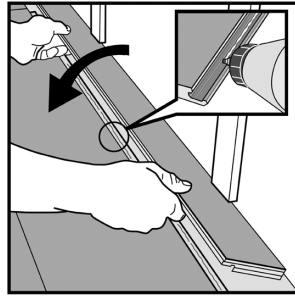


2.

Dismantle the tiles by sliding them horizontally.

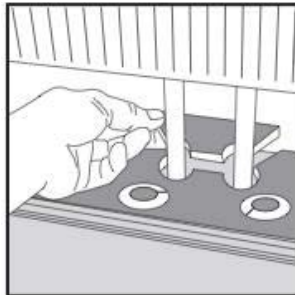
Do not fold up the floor tiles, as this will destroy the locking elements.

SPECIAL INSTALLATIONS - HORIZONTAL INSTALLATION



Cut off locking element using a chisel, apply PVC adhesive to the adjusted strip and press the tiles together horizontally. If necessary, place spacers between the final plank and the wall while the adhesive hardens.

SPECIAL INSTALLATIONS - RADIATOR PIPES



Installation around radiators. Drill holes 5-10mm bigger than the diameter of the pipes. Glue together the block behind the pipes.

UK WARRANTY

1. Luxury Floor is responsible for manufacturing defects.
2. Luxury Flooring must be installed correctly according to the outlined above instructions. The warranty covers regular use.
3. Planks showing visible defects should not be used as part of the installation. It is the responsibility of the owner/fitter to deselect these boards at the time of installation. These boards are to be allowed for in the 5% waste tolerance. Boards with visible defects that are installed are excluded from this warranty. Colour and grade de-selection is not allowed for, as this is a personal choice and not a defect in the manufacturing of the product.
4. Always check all boards to ensure the board dimensions are accurate before installing. Off-cut boards should not always be classed as waste, short or longer pieces can both be used around the perimeter of the floor if permitted.
5. LT flooring, is subject to normal wear and shall not be covered by this warranty, i.e. if you don't maintain the floor correctly, the warranty is null and void.
6. Excluded under this warranty are scratches, heavy impacts, humidity, and damage caused by incorrect use or lack of correct maintenance.
7. If you have a defect, which falls under the conditions mentioned in this warranty, you should report this to your dealer in writing within 14 days after detecting the defect. In your letter, you should include a copy of the original invoice.
8. This warranty only relates to the planks supplied, and consequently, it does not include labour costs, the costs of additional material and any other consequential loss.
9. In case of a dispute arising from the Luxury Floor warranty, either party may call upon an independent expert to render binding advice. If this clause is applicable, the cost is to be agreed in writing with all parties involved in advance.
10. Where the Luxury Floor warranty applies, Luxury Floor or its distributors will replace the faulty product. In case the product in question is no longer available, Luxury Floor will ensure replacement of an alternative product of the same quality.
11. This warranty shall apply only to the original owner/purchaser of the wood floor .

WARRANTY WILL NOT BE APPLICABLE IN CASE OF:

1. The floor has not been installed following the correct methods outlined in the instructions by a qualified installer .
2. The faults were noticed and ignored before the floor was installed.
3. Defects and faults having arisen due to dampness or water damage or any other causes as a result of force majeure.
4. Defects and faults have been caused by improper use or negligence and failure to use the product for its intended purpose, as well as having been caused by having disregarded the instructions for installation, use and maintenance.
5. Visual faults having arisen as a result of any deformation of the boards due to changed climate conditions, any variations in colour due to the influence of sunlight and the effects of normal ageing and wear and tear of the finishing coat
6. Stains or mechanical damage to the surface (scratches and dents) resulting from improper treatment during transport, storage and any damage caused by stiletto heels, furniture, stones, sand and pets.

**MANUFACTURING TOLERANCE
LVT FLOORS ARE A MANY VARIANCES IN COLOUR
AND DECOR AND CHARACTER IN EACH
INDIVIDUAL PIECE OF FLOORING, WE ALWAYS
THEREFORE RECOMMEND YOU WORK FROM 3-4
PACKS OF FLOORING AT A TIME IN ORDER TO
GET THE BEST NATURAL COLOUR MIX.. THIS
PRODUCT IS PRODUCED WITH A
MANUFACTURING TOLERANCE OF + OR – 1.5%
ON THE DIMENSION OF THE BOARD AND IN LINE
WITH SPECIFIED MANUFACTURING GUIDELINES,
AS SUCH ANY ITEMS OUT OF TOLERANCE
SHOULD BE DISMISSED AS PART OF THE 5%
MANUFACTURING TOLERANCE.**